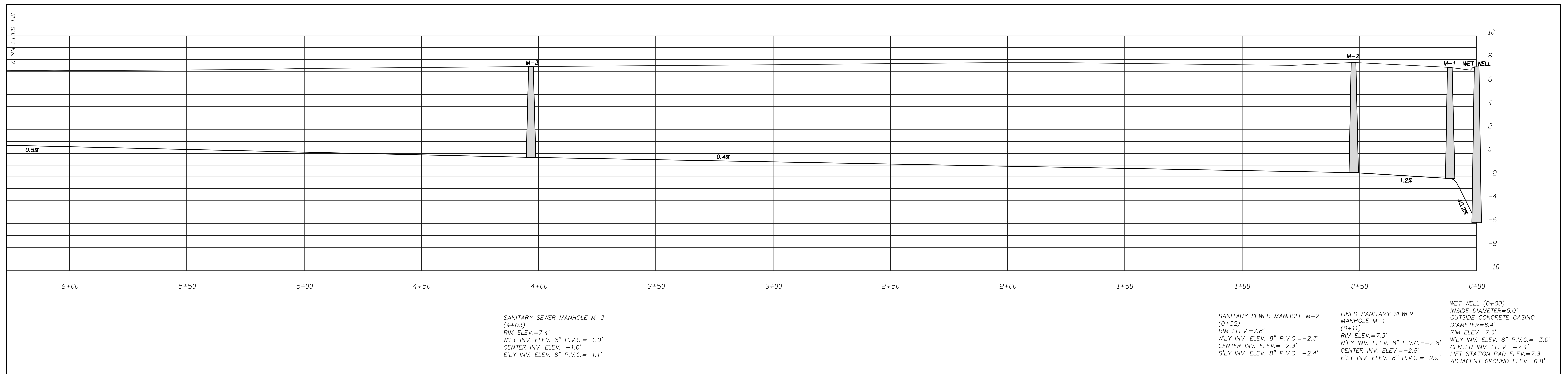
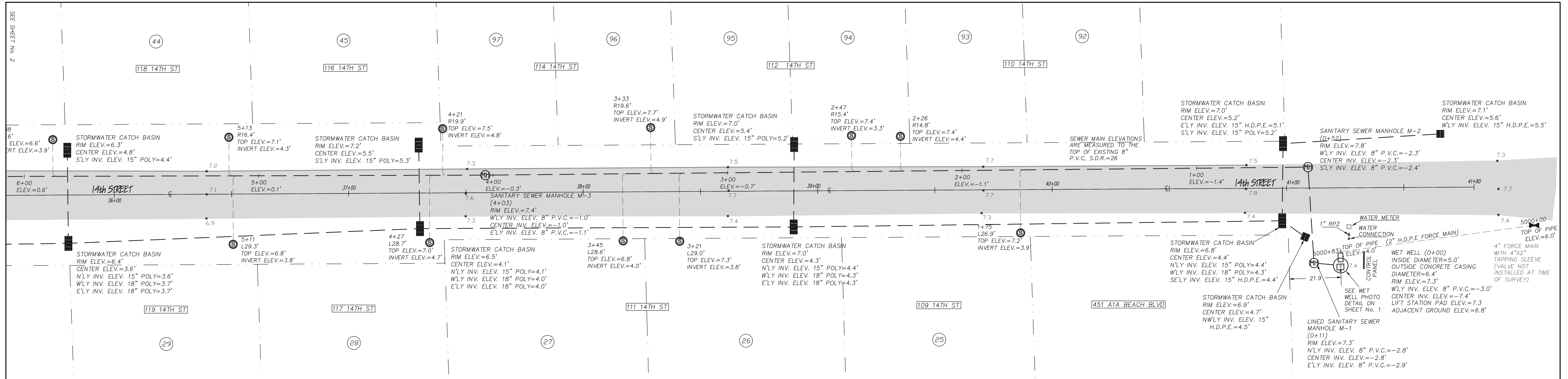


- LEGEND:**
- T.B.M. TEMPORARY BENCHMARK
 - ELEV. ELEVATION
 - P.V.C. POLYVINYL CHLORIDE
 - S.D.R. STANDARD DIMENSION RATIO
 - R. RIGHT
 - L. LEFT
 - N'LY NORTHERLY
 - S'LY SOUTHERLY
 - E'LY EASTERLY
 - W'LY WESTERLY
 - INV. INVERT
 - RPZ REVERSE PRESSURE ZONE
- SYMBOLS:**
- 6" P.V.C. SANITARY SEWER SERVICE CLEANOUT
 - TYPE "A" SANITARY SEWER MANHOLE WITH 3" TOP DIAMETER (BRICK)
 - 8" P.V.C., S.D.R. 26, SANITARY SEWER MAINLINE
 - 6" P.V.C., SANITARY SEWER SERVICE LINE
 - TEMPORARY BENCH MARK

AS-BUILT SEWER SURVEY FOR
RJ'S
UNDERGROUND
UTILITIES
 ST. AUGUSTINE BEACH SEWER SYSTEM
 IMPROVEMENTS,
 MINORCA & ATLANTIC BEACH
 SUBDIVISION,
 ST. JOHNS COUNTY, FLORIDA



SEE PAGE No. 2 FOR CERTIFICATIONS

SURVEY NOTES:

- 1) THE FIELD DATA UPON WHICH THIS MAP OR PLAT IS BASED ON DATA COLLECTED USING REAL TIME KINEMATIC GPS.
- 2) THIS MAP OR PLAT HAS NOT BEEN CALCULATED FOR CLOSURE.
- 3) THIS SURVEY WAS PERFORMED USING A TOPCON HIPER PRO RTK GPS SYSTEM AND TOPCON TOTAL STATION.
- 4) THIS MAP DOES NOT CONSTITUTE A BOUNDARY SURVEY AND IS ONLY INTENDED TO PROVIDE SEWER AS-BUILT LOCATION INFORMATION.
- 5) SEWER SERVICE LATERAL INVERT ELEVATIONS SHOWN WERE MEASURED FROM THE SERVICE CAP TO THE TOP OF THE UNDERGROUND 45° BEND LEADING TO THE 8" S.D.R. 26 P.V.C. SANITARY SEWER PIPE.
- 6) THE INFRASTRUCTURE SHOWN ON THIS DRAWING WAS LOCATED BASED ON SURFACE OBSERVATION. THERE MAY BE ADDITIONAL UTILITIES THAT ARE NOT SHOWN. THIS SURVEY WAS UNDERTAKEN TO LOCATE SEWER.
- 7) LOT NUMBERS AND LOT INFORMATION SHOWN ARE FOR REFERENCE ONLY AND PROVIDED BY CLIENT AND/OR CLIENT'S REPRESENTATIVE.
- 8) NO ATTEMPT WAS MADE TO DETERMINE WETLANDS OR OTHER ENVIRONMENTAL ISSUES, IF ANY, THAT MAY AFFECT THE SUBJECT PROPERTY.
- 9) THERE MAY EXIST ADDITIONAL EASEMENTS NOT SHOWN HEREON.

MATERIALS NOTES:

- 1) ALL SEWER SERVICES ARE 6" P.V.C.
- 2) SEWER MAIN LINES ARE 8" SDR 26 P.V.C.

REFERENCES:

- 1) AUTOCAD DRAWINGS FOR MINORCA & ATLANTIC BEACH SUBDIVISION, RELEASED TO RJ'S UNDERGROUND UTILITIES, OCTOBER 2009. DIGITAL DATA OF CITY OF ST. AUGUSTINE BEACH SEWER SYSTEM IMPROVEMENTS, ST. JOHNS COUNTY, FLORIDA CREATED BY CAMP DRESSER & MCKEE INC., AUGUST 2009.

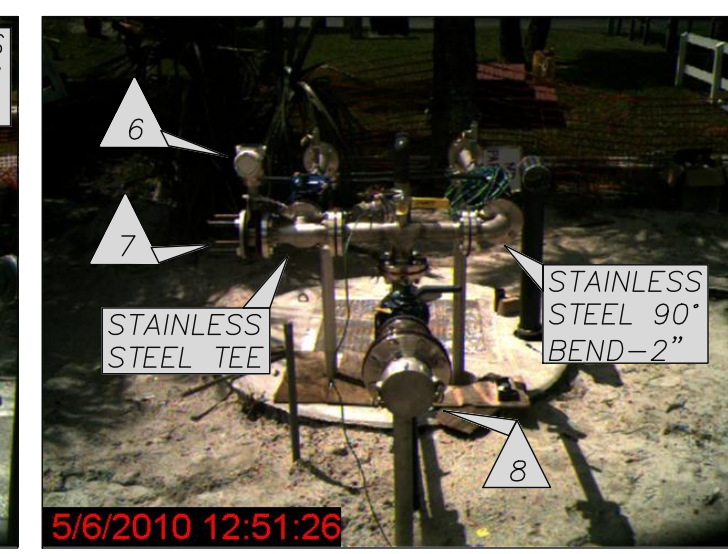
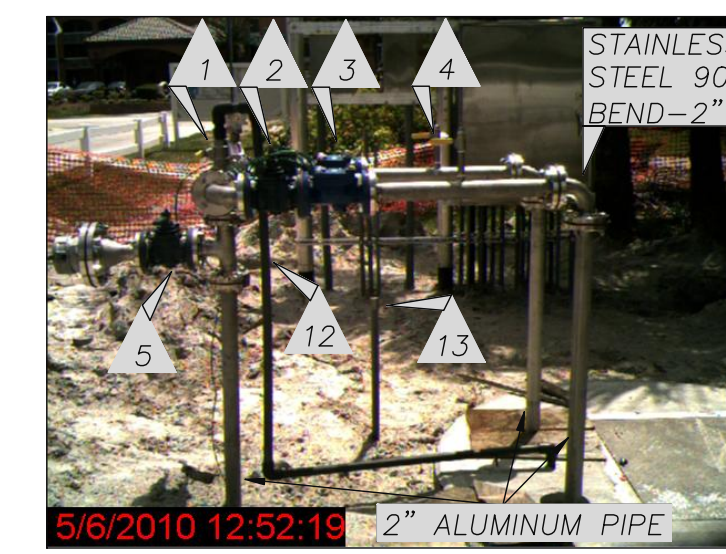
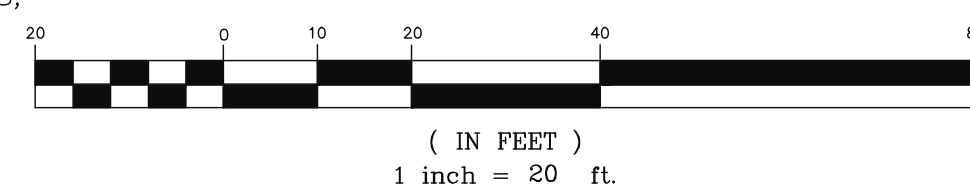
PUMP STATION NOTES:

SERVICE VOLTAGE: 240 VAC, 3 PHASE, 4-WIRE, 60Hz

PUMP DATA: (2) PUMPS RATED 4HP, 10 FLA LARGEST MOTOR 4HP, 10 FLA

PANEL LABELED 508A: TOTAL PANEL FLA: 49 ENCLOSURE UL RATING TYPE: 3R PANEL SHORT CIRCUIT RATING: 2 KA RMS SYMMETRICAL, 240V MAX

GRAPHIC SCALE



- 1) 1" VALVE-BLOW OFF LINE TO WET WELL
- 2) 2" CAST IRON PLUG VALVE
- 3) 2" CHECK VALVE
- 4) 1/2" VALVE FOR PRESSURE GAUGE
- 5) 2" CAST IRON PLUG VALVE
- 6) AUTOMATIC VALVE
- 7) STAINLESS STEEL PRESSURE TRANSMITTER AND SENSOR
- 8) 4" KAMLOCK
- 9) EMERGENCY SUCTION PIPE WITH 90° BEND & 4" KAMLOCK
- 10) WET WELL ACCESS PANEL
- 11) 4" PVC TEE VENT, SCREENED
- 12) 1" PVC, SCH 80
- 13) 1" PVC, SCH 80



300 CAMDEN AVENUE
 WOODBINE, GA 31569
 (912) 576-8854

DWG. BY: ET PM: MJ
 DWG: 07/21/10 SURVEYED: 05/06/10
 JOB: 09082_AB 1" = 20'
 SHEET 1 OF 2

AS-BUILT

REVISED: 07/21/10