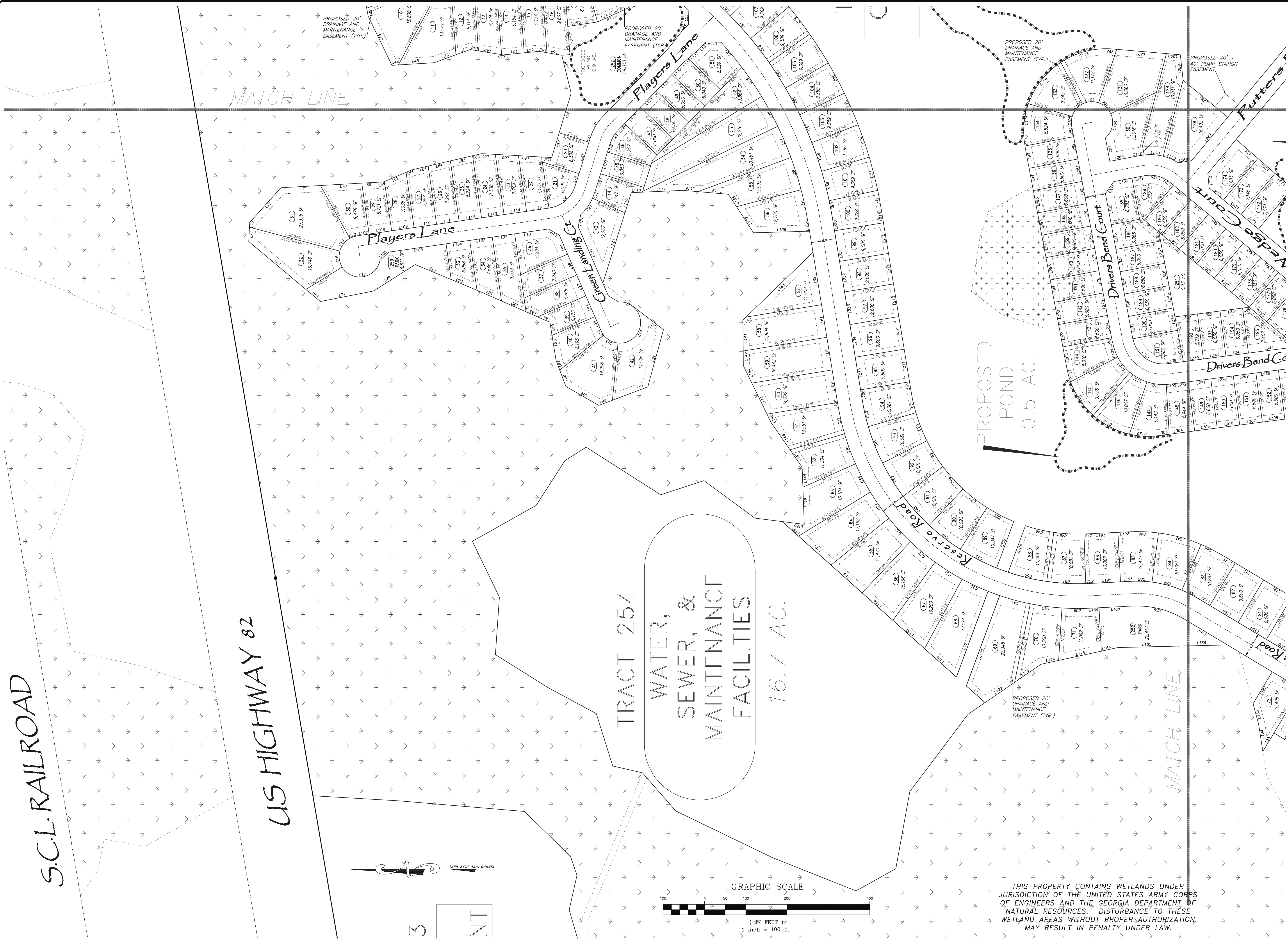


PRELIMINARY PLAT OF
MAGNOLIA PRESERVE Phase 1
 334th G.M.D.,
 BRANTLEY COUNTY, GEORGIA

- LEGEND:**
- 1/2" IRON PIN FOUND (1/2" REBAR UNLESS NOTED)
 - 1/2" IRON PIN SET (1/2" REBAR)
 - N/W RIGHT OF WAY
 - C/MF CONCRETE MONUMENT FOUND
 - N/M/S NO MONUMENT FOUND OR SET
 - D/R DEPARTMENT OF NATURAL RESOURCES
 - C/L CHAIN LINK FENCE
 - C/NC CONCRETE
 - P/B POINT OF BEGINNING
 - N/F NOW OR FORMERLY
 - D/B DEED BOOK
 - P/C PAGE
 - B/L SETBACK LINE

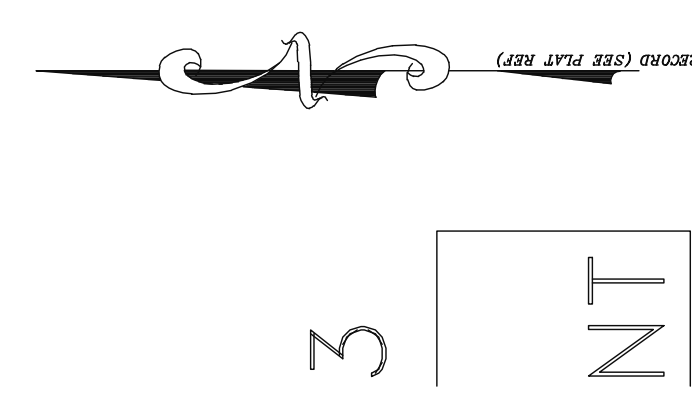


S.C.L. RAILROAD

US HIGHWAY 82

TRACT 254
 WATER, &
 SEWER, &
 MAINTENANCE
 FACILITIES
 16.7 AC.

PROPOSED
 POND
 0.5 AC.



GRAPHIC SCALE
 0 50 100 200 400
 (- IN FEET)
 1 inch = 100 ft.

THIS PROPERTY CONTAINS WETLANDS UNDER JURISDICTION OF THE UNITED STATES ARMY CORPS OF ENGINEERS AND THE GEORGIA DEPARTMENT OF NATURAL RESOURCES. DISTURBANCE TO THESE WETLAND AREAS WITHOUT PROPER AUTHORIZATION MAY RESULT IN PENALTY UNDER LAW.

NOT FOR RECORDING

CLS
 CUMBERLAND LAND SURVEYORS
 300 CAMDEN AVENUE
 WOODBRIDGE, GA 31569
 (912) 576-8854

DWG. BY: SH P.M. MJ
 DWG. 8/27/2008 SURVEYED: SEE REF.
 JOB: 08152 SCALE AS NOTED
 SHEET 2 of 5