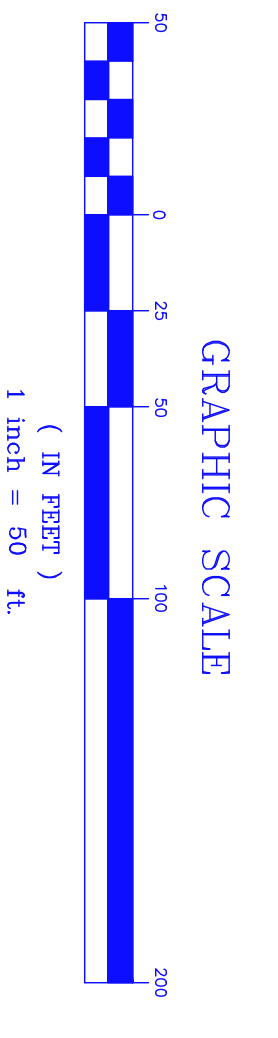
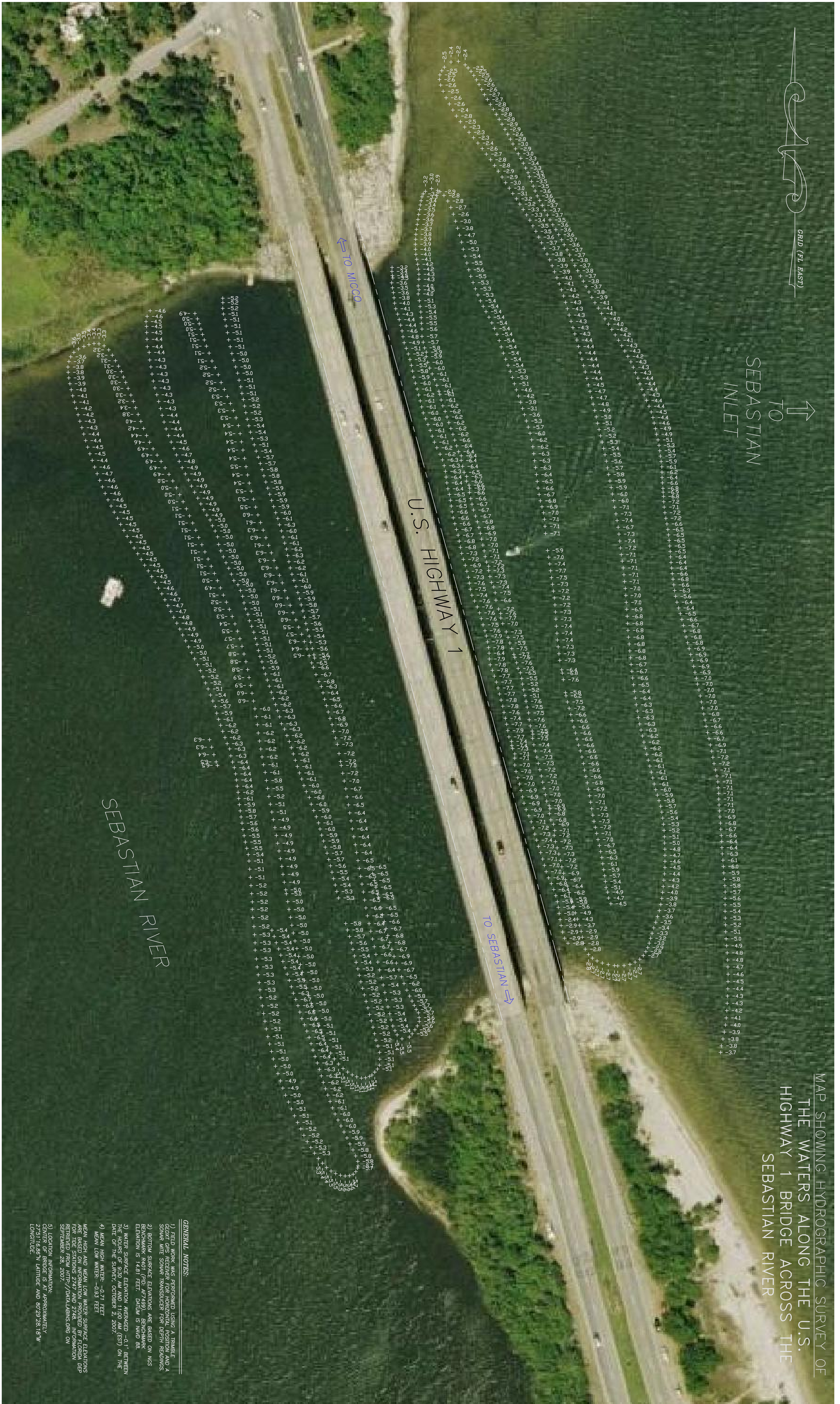




GRID (F.L. EAST)

SEBASTIAN RIVER  
TO  
INLET

MAP SHOWING HYDROGRAPHIC SURVEY OF  
THE WATERS ALONG THE U.S.  
HIGHWAY 1 BRIDGE ACROSS THE  
SEBASTIAN RIVER



**CUMBERLAND LAND SURVEYORS OF FLORIDA, INC.**  
P. O. BOX 18277 ~ YULEE, FL 32091 ~ (904) 225-2527 ~ FAX (904) 225-2528

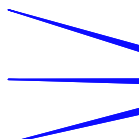
**GENERAL NOTES:**  
(1) BEARINGS SHOWN HEREIN ARE BASED ON N/A FOR THE N/A  
(2) THIS PROPERTY HAS NOT BEEN ABSTRACTED  
(3) FROM EASEMENTS, COVENANTS, RESTRICTIONS  
(4) AND/OR EASEMENTS, UNLESS SPECIFICALLY  
SHOWN  
(5) THIS PROPERTY APPEARS TO BE WITHIN  
FEMA'S FLOOD INSURANCE RATE MAP PANEL  
DATE OF FIELD SURVEY: 2/2007

**SCALE: 1"=50'**  
10-02-2007

**LEGEND:**  
B.M. BENCH MARK  
C.C. CORNER  
E.C. ELEVATION CORNER  
G.C. GROUND CORNER  
I.C. INTERSECTION CORNER  
M.C. MOUND CORNER  
P.C. POINT OF CURVATURE  
P.T. POINT OF TANGENCY  
R.C. RADIUS CORNER  
S.C. SPLIT CORNER  
T.C. TANGENCY CORNER  
V.C. VERGENCE CORNER  
W.C. WATER CORNER  
X.C. CROSSING CORNER  
Y.C. YIELD CORNER  
Z.C. ZONE CORNER

**DATE OF FIELD SURVEY:** 10-02-2007  
**CHRL. S. COVENS. FLA. CERT. NO. 3129**

**GENERAL NOTES:**  
(1) FIELD WORK WAS PERFORMED USING A TRIMBLE  
RECOIL TOTAL STATION AND A  
SONAR WIRE SONAR TRANSDUCER FOR DEPTH READINGS.  
(2) BOTTOM SURFACE ELEVATIONS ARE BASED ON NGS  
BENSON BAY DATUM (1988) WHICH IS APPROXIMATELY  
ELEVATION IS 14.81 FEET DATUM IS NAD 83.  
(3) WATER SURFACE ELEVATION MEASURED 0.1' BETWEEN  
DATE OF THE SURVEY (OCTOBER 2, 2007).  
(4) MEAN LOW WATER: -0.31 FEET  
MEAN HIGH AND MEAN LOW WATER SURFACE ELEVATIONS  
FOR TIDE STATIONS 2747 AND 2748. INFORMATION  
RETRIEVED FROM [HTTP://DNL.M.DALMS.ORG](http://dnlm.dalms.org) ON  
SEPTEMBER 28, 2007.  
(5) LOCATION INFORMATION:  
CENTER OF BRIDGE IS AT APPROXIMATELY  
27°51'16.89" N LATITUDE AND 80°29'28.18" W  
LONGITUDE.



LB-7805